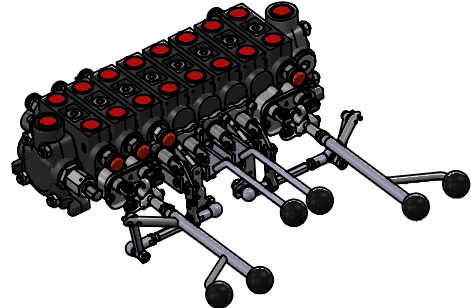
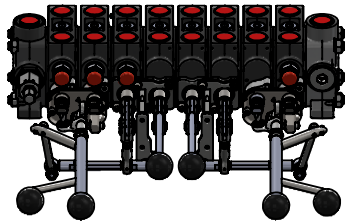


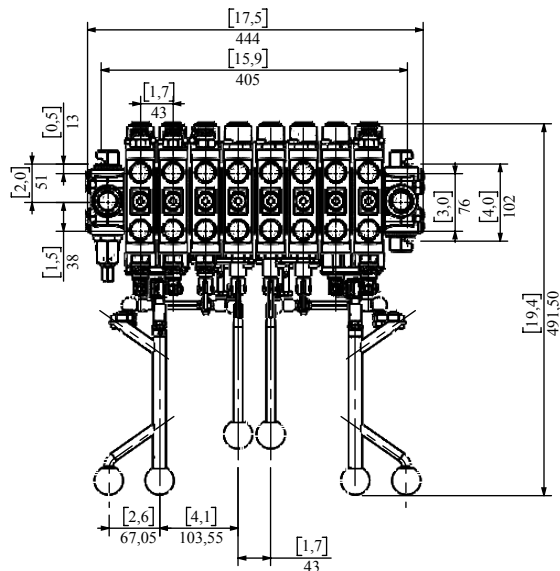
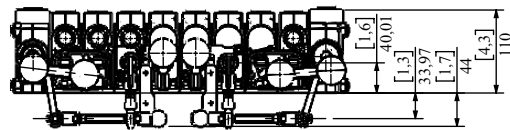
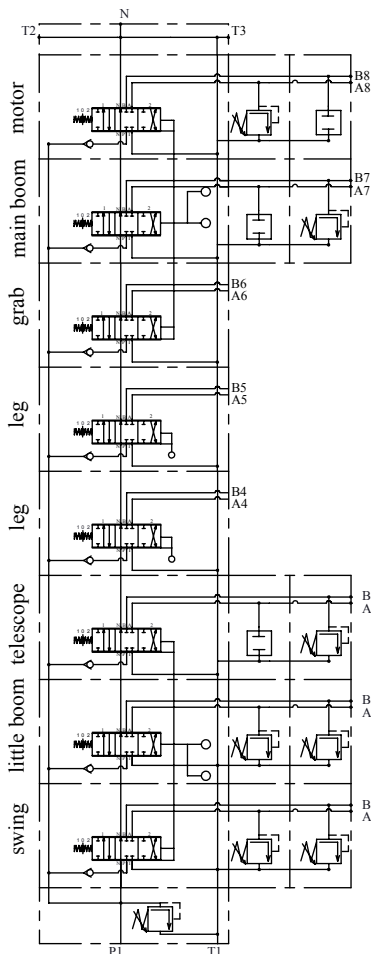
Stackable valve for forest crane applications with manual control (3-axis joystick)



Sectional directional control valve with 8 elements (8ZC70) operated by mechanical joysticks with manual operators controlling 3 spools (3rd movement by rotation). Also available with spool positioners with restrictions (1rAB) for regulating rotor speed.

| | | |
|-------------------|----------|-----------|
| Nominal flow rate | 70 l/min | 18 US gpm |
| Max. flow rate | 80 l/min | 21 US gpm |

| | | |
|----------------------------|---------|----------|
| Max. pressure | 250 bar | 3625 psi |
| Max. pressure on ports | 300 bar | 4350 psi |
| Max. pressure on tank line | 50 bar | 725 psi |



| Standard thread | | | | | |
|-----------------|----------------|-----------------|--------------------|------------|------------|
| | A, B | P | T1, T2, T3 | Standard | N |
| G (BSP) | G 1/2 | G 1/2 | G 3/4 | DIN 3852-2 | M26x1,5-6H |
| S (UNF) | 7/8-14 (SAE10) | 7/8-14 (SAE 10) | 1 1/16-12 (SAE 12) | ISO 11926 | M26x1,5-6H |